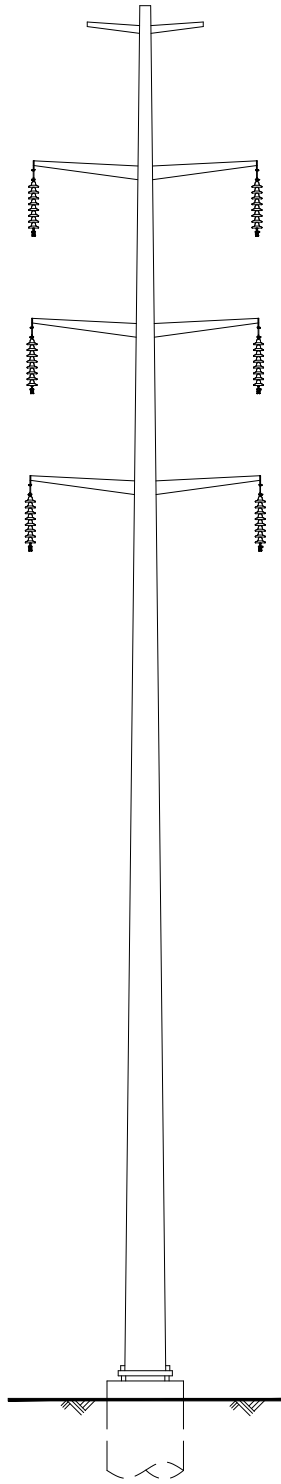
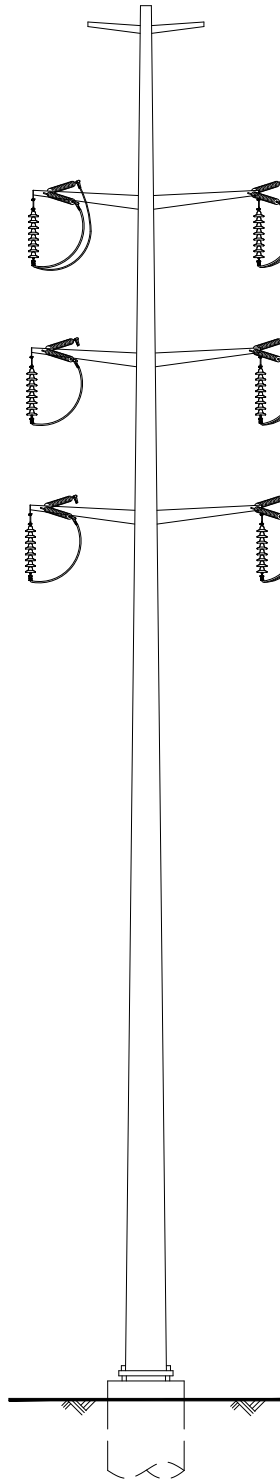


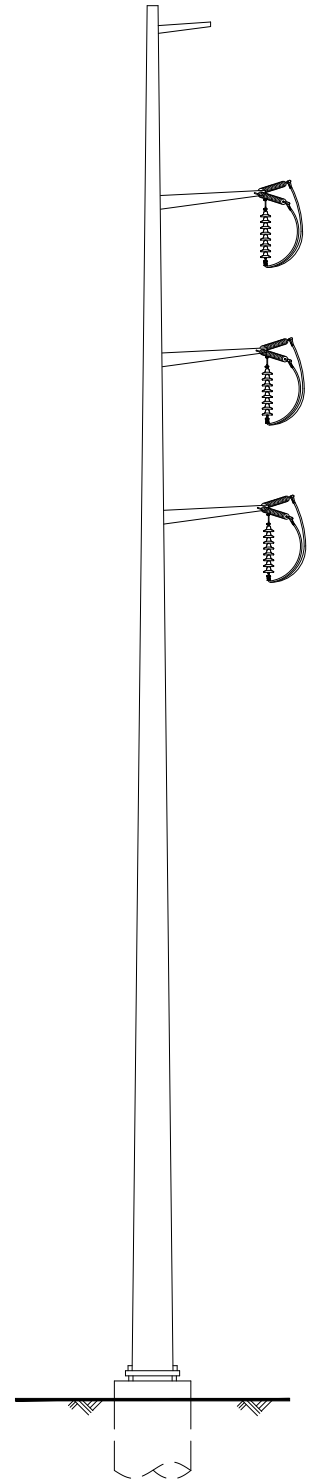
## TYPICAL MONOPOLE CONFIGURATIONS



STANDARD DOUBLE CIRCUIT  
TANGENT STRUCTURE  
COMPRISED OF GALVANIZED STEEL



STANDARD DOUBLE CIRCUIT  
DEADEND STRUCTURE  
COMPRISED OF GALVANIZED STEEL



STANDARD SINGLE CIRCUIT  
DEADEND STRUCTURE  
COMPRISED OF GALVANIZED STEEL

### NOTE:

1. THE AVERAGE ABOVE GROUND HEIGHT OF THE PROPOSED GALVANIZED STEEL MONOPOLES WILL BE 110', BUT WILL RANGE FROM 75' TO 170' TALL DEPENDING ON LOCATION AND SPAN LENGTH.
2. THE MOST COMMON WIDTH OF THE STRUCTURE (FROM THE NORTHERN INSULATOR TO THE SOUTHERN INSULATOR OR ACROSS DAVIT ARMS) IS 20'-0". THE WIDTH OF THE SINGLE CIRCUIT MONOPOLES RANGE FROM 8'-0" TO 12'-0". THE GALVANIZED STEEL MONOPOLES WILL BE GRAY IN COLOR.
3. THE INSULATOR MATERIAL WILL BE GLASS FOR SUSPENSION AND STRAIN/DEAD-END INSULATORS.